

here to help...support & advice numbers

NAS South Lanarkshire: 07941 252 485

Local advice and support direct from the South Lanarkshire branch.

NAS Helpline: 0845 070 4004 (Mon-Fri 10am-4pm)

A UK wide service with advisers who have all worked with people with an ASD. The line is open to people with ASD, family members & professionals.

Advocacy For Education: 0845 070 4002 (Option 3)

Education Advice and advocacy for parents and carers of children with autism.

Parent To Parent Line: 0800 9520 520

Free, confidential support to parents of a child or adult with autism provided by other volunteer parents.

future meetings

We meet every second Wednesday of the month in the District Court Room, Civic Centre, Andrew Street, East Kilbride (beside the Ballerup Hall) from 7:30pm until 9:30pm. Mums & Dads, Granies & Grandpas, Aunties & Uncles, Carers and Professionals are all welcome.

We work to have guest speakers at our meetings, but the meetings without speakers are always very lively too! Speakers will be confirmed on the email mailing list and website. Please let us know if you have any suggestions for future speakers.

Future dates and speakers are as follows:

Dec 12: Mind Mapping Night!

Jan 9: Jackie Newel, Duncanrig Autism Unit

Feb 13 : TBA

contact details

If you would be interested in helping out in any way, please make contact. Our contact details are:

Ross Macfadyen (Branch Officer)

Tel: 07941 252 485

email: mail@trialogue.org.uk

web: www.trialogue.org.uk

Branch Address: South Lanarkshire NAS, 9 Halfmerk North, Maxwellton, East Kilbride, G74 3EH.

got an email address?

It is much cheaper and easier to email [trialogue](mailto:mail@trialogue.org.uk). Please send an email to mail@trialogue.org.uk and I'll add you to the list. You will also receive news updates/info as I get it. No "spam" guaranteed! Many thanks. This newsletter is also available at : www.trialogue.org.uk/Newsletters/index.htm

the usual legal notice!

This newsletter is © 2007 The National Autistic Society: South Lanarkshire branch; including all material and designs and cannot be reproduced without permission. Certain elements may be copyright of The NAS. Views expressed in this newsletter are not necessarily those of The National Autistic Society or the South Lanarkshire branch. Reference to specific services or approaches to autism does not imply endorsement.



The Newsletter of South Lanarkshire NAS

Issue No 9 : Dec 2007

think
differently
about
autism



The NAS has launched a long-term campaign: *think differently about autism*. The campaign will have two distinct phases. The first, launched in October, is about improving public awareness and understanding of autism and Asperger syndrome. The second phase, launching in February, will focus on services and support for adults with autism.

A new report, *think differently—act positively*, is based on a survey of 2000 UK adults. It found that while large numbers of people know autism exists, there are significant gaps in public knowledge and understanding, including the fact that fewer know of Asperger syndrome.

The report shows that the public want to do the right thing but would need a higher awareness of autism. For example, only three percent of those surveyed said that if they saw a child screaming in a supermarket they would consider that the child may have a disability. More common reactions would be to blame the parent or think that the child was naughty. However, nearly two thirds of people believed they would probably think differently if they were aware that the child had autism.

The *think differently* campaign will try to turn these good intentions into a reality by increasing public awareness of the characteristics of autism and the needs of the people it affects.

See inside for more



campaigns specialmake room for autism see inside...



Your autism charity

think differently about autism

FACT

Autism is a lifelong disability

30% of those who had heard of autism mistakenly thought that it mostly affects children.

1 in every 100 is affected by autism

92% of people in our survey who had heard of autism were unaware of how common autism is.

Asperger syndrome is a form of autism

Although 95% of people in our survey said they had heard of autism, only 44% had heard of Asperger syndrome.

FICTION

Autism can be cured

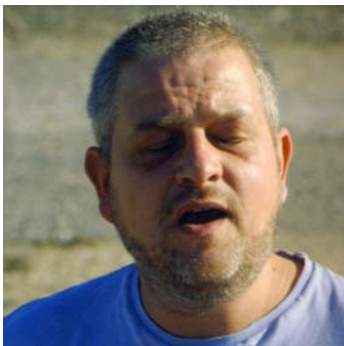
Only 41% were aware that there is no cure for autism.

Most people with autism have special abilities

Over a third said they thought most people with autism have special abilities (eg in art, maths, etc). In fact, it is estimated that only 1 in 200 with autism have special abilities.

Children with autism are just badly behaved

15% mistakenly thought that some children with autism are just badly behaved.



"We're careful where we go and who we're with. We don't go places where I know he might get distressed. I just wish there was more awareness out there, and understanding"

Parent of an 8 year old boy with autism

Over the next year, the *think differently about autism* campaign will showcase the reality of living with autism through art, photography and personal stories. Please share your experiences on the www.think-differently.org.uk website.

We will be sending copies of the *think differently—act positively* report to key people in South Lanarkshire to ask them to think differently about autism and act positively to eradicate misconceptions, intolerance and discrimination.

Please fill in and return the enclosed petition form! Thank You!

make room for autism in rutherghlen/cambuslang

ROOM WANTED

1 small classroom
Rutherghlen / Cambuslang based
Will be used by local children
with autism
Preferably next to a primary
school

* a room close to home!
somewhere we can
learn and grow

Rutherghlen and Cambuslang parents are lobbying South Lanarkshire Council to make room for children with autism at a local school. 14 primary schools are scheduled for rebuilding, but no spaces are planned for autism. The area is currently the only area in South Lanarkshire without autism specific provision. There are also no plans to remedy this situation.

The campaign is being supported by Robert Brown MSP (ex-education Minister), James Kelly MSP, local Councillor Eileen Baxendale and ourselves. The group have been busy col-

lecting supporters through an online and street based petition. The total signatures now stands at over 1,000!

James Kelly MSP said " The council have done well in providing resources for children with autism in other areas of South Lanarkshire. The campaign group are looking for an extension of these resources to Rutherghlen & Cambuslang. I do not think this an unreasonable demand."

South Lanarkshire Council agrees that there could be up to 650 children of school age in the Council area, yet there are just 78 primary and 36 secondary placements.



NAS South Lanarkshire figures show that there should be around 60 autism specific placements in the area. The Clydesdale area, with a population of 59,000, has 12 current placements and a further 12 being added in the next school year. Rutherghlen & Cambuslang, which has a population of 57,000 has NO placements at all. This means children from the area are being transported outside, thus excluding them from their local community.

Please sign and return the enclosed petition to add your support to the campaign. For more information please contact Jackie Brown on 07766 000 268 or on the web site www.makeroomforautism.co.uk. The things we've been doing to help can be viewed at dialogue.org.uk/makeroom.

Please fill in and return the enclosed petition form! Thank You!